







rRNA depletion for any flowering plant (Angiospermae)

Pan-Plant riboPOOL

The Pan-Plant riboPOOL is designed to efficiently remove ribosomal RNA (rRNA) of flowering plants. The riboPOOL includes probes to deplete cytosolic, plasmid and mitochondrial rRNAs, and it can be applied to plant total RNA samples of different origin (e.g., leaves, seeds and root).

The Pan-Plant riboPOOL offers:

-  Efficient rRNA-depletion for any flowering plant
-  Possibility to combine with other riboPOOL
-  Fast and enzyme-free workflow
-  Compatible with lab-automated workflows

Pan-Plant riboPOOL Performance

The Pan-Plant riboPOOL consistently removes > 90% of rRNA from total RNA samples originating from different flowering plants species (Figure 1). The riboPOOL is designed to target different conserved regions of each rRNA, ensuring high wide taxonomic coverage across the group (Figure 2, Figure 3).

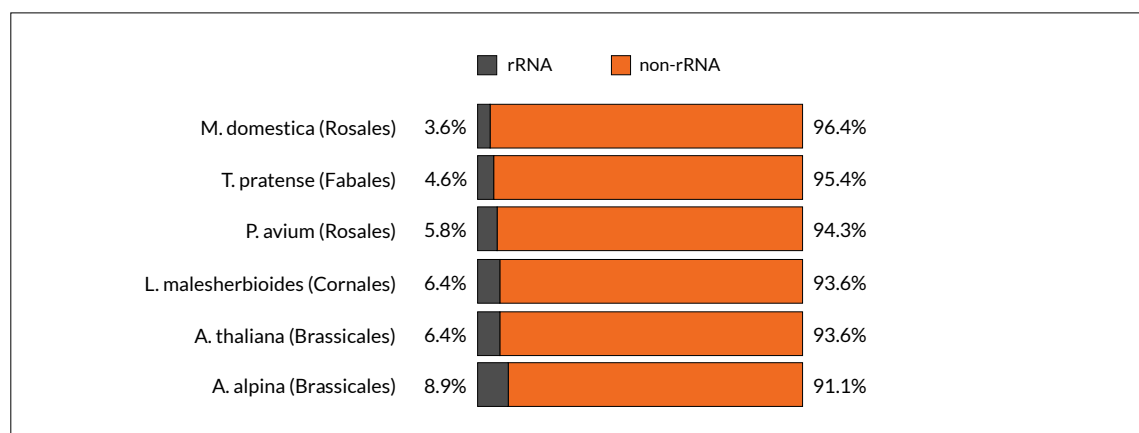


Figure 1 Percentage of rRNA reads of different flowering plants after rRNA depletion with Pan-Plant riboPOOLS. Data kindly provided by Dr. Bruno Huettl and Dr. Christian Wöhle (Max Planck Genome Centre Cologne, Germany).



Pan-Plant riboPOOL probes mapping to 28S

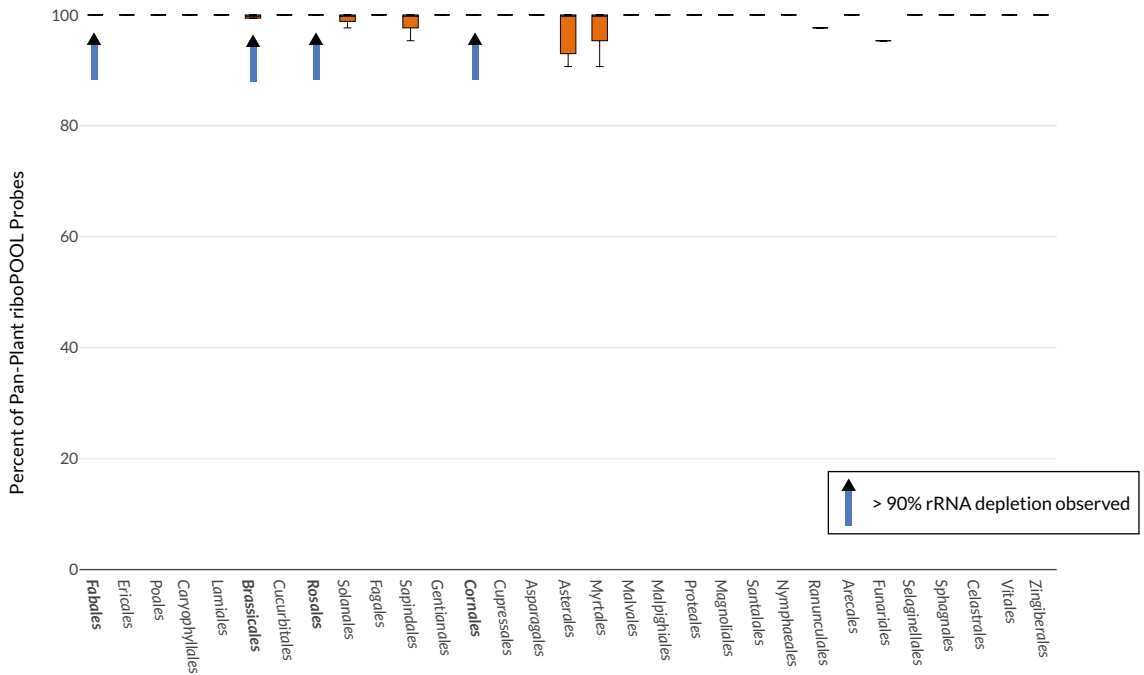


Figure 2 Percentage of Pan-Plant riboPOOL probes exhibiting > 90% identity with their target 28S rRNA sequence of > 100 flowering plant species. Blue arrows indicate groups for which ribodepletion rates were validated with RNA-Seq. Thin black lines indicate groups in which the coverage value is identical for all species included.

Pan-Plant riboPOOL probes mapping to 18S

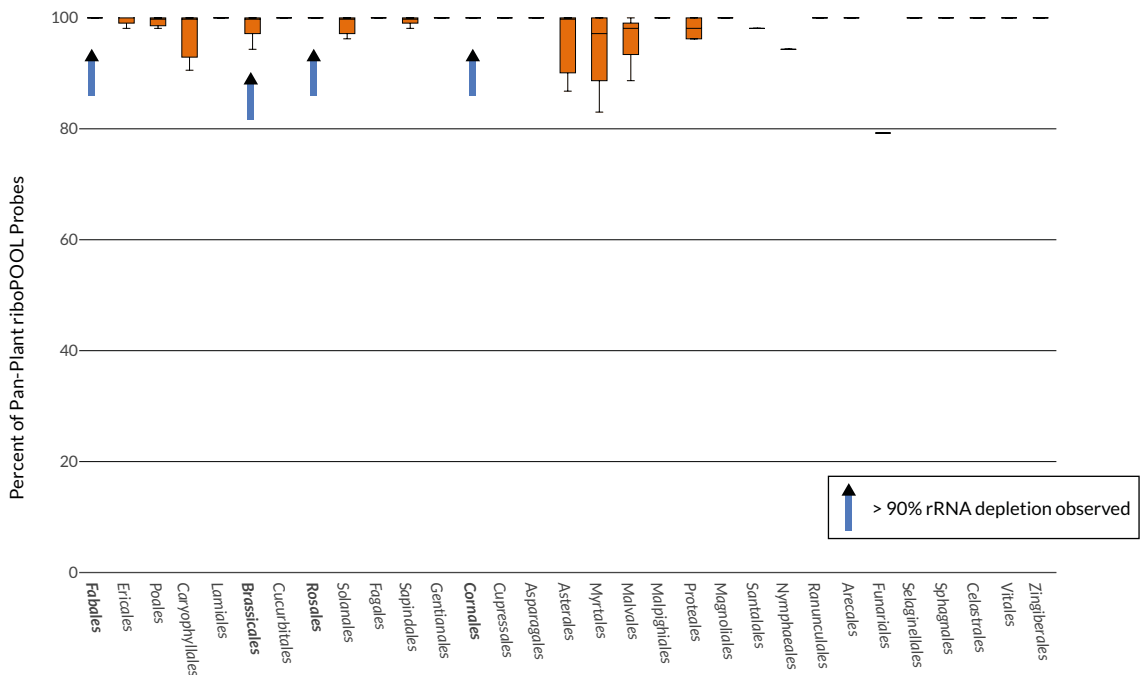
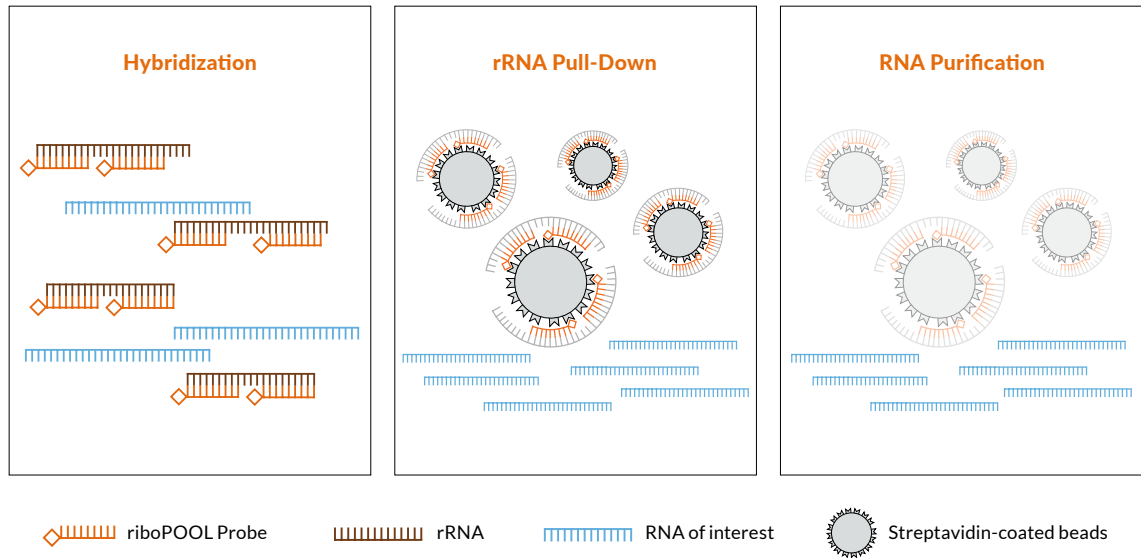


Figure 3 Percentage of Pan-Plant riboPOOL probes exhibiting > 90% identity with their target 18S rRNA sequence of > 100 flowering plant species. Blue arrows indicate groups for which ribodepletion rates were validated with RNA-Seq. Thin black lines indicate groups in which the coverage value is identical for all species included.


Workflow


The Pan-Plant riboPOOL consist of a complex pool of biotinylated probes specifically design to target and remove rRNAs from flowering plant total RNA samples. Hybridization of riboPOOL probes to rRNA fragments is followed by rRNA pull-down via streptavidin-coated magnetic beads and RNA purification. The entire workflow can be completed in under 2 hours and can easily be integrated into established RNA-Seq workflows.



Ordering

The Pan-Plant riboPOOL can be ordered in two different formats:

 Full kit: includes all necessary reagents for ribodepletion. r post-depletion RNA purification, the kit allows to choose between magnetic beads or ethanol precipitation.

 Probes only. Streptavidin beads and buffers are not included.

riboPOOL Kit

| | | |
|--------------------------------------|--------------------------------------|--------------------------------------|
| 12rxn Catalogue Nr. dp-K012-31 | 24rxn Catalogue Nr. dp-K024-31 | 96rxn Catalogue Nr. dp-K096-31 |
|--------------------------------------|--------------------------------------|--------------------------------------|

riboPOOL Probes

| | | |
|--------------------------------------|--------------------------------------|--------------------------------------|
| 12rxn Catalogue Nr. dp-P012-31 | 24rxn Catalogue Nr. dp-P024-31 | 96rxn Catalogue Nr. dp-P096-31 |
|--------------------------------------|--------------------------------------|--------------------------------------|

Distributors

Europe

| Country/Region | Distributor | Website |
|-------------------|------------------------|-----------------------|
| Czech Republic | Eastport Life Sciences | www.eastport.cz |
| Germany - Austria | Biozym Scientific | www.biozym.com |
| Italy | Diatech Lab Line | www.labline.it |
| Netherlands | Westburg Life Sciences | www.westburg.eu |
| Scandinavia | LabLife Nordic AB | www.lablifenordic.com |
| Spain | Labclinics | www.labclinics.com |
| United Kingdom | Cambridge Bioscience | www.bioscience.co.uk |

North America

| Country/Region | Distributor | Website |
|----------------|--------------------|------------------------|
| USA - Canada | Galen Lab Supplies | www.galenmolecular.com |

Asia

| Country/Region | Distributor | Website |
|----------------------|---------------------|-----------------------|
| China | Bluescape | www.bluescape.cc |
| | Pukairui | www.pukairui.com |
| Israel | Eisenberg Bros. Ltd | www.eisenbros.co.il |
| Japan | Bizcom Japan | www.bizcomjapan.co.jp |
| South Korea | Koma Biotech | www.komabiotech.co.kr |
| Taiwan | Interlab CO., LTD, | www.interlab.com.tw |
| United Arab Emirates | Biomss | www.biomss.com |

Customer Support

For customer and technical support you can send us an email at info@sitools.de

Alternatively, you can call us at +49 89 89557286

Protocols and MSDS are available in the Resources section at

www.sitoolsbiotech.com

